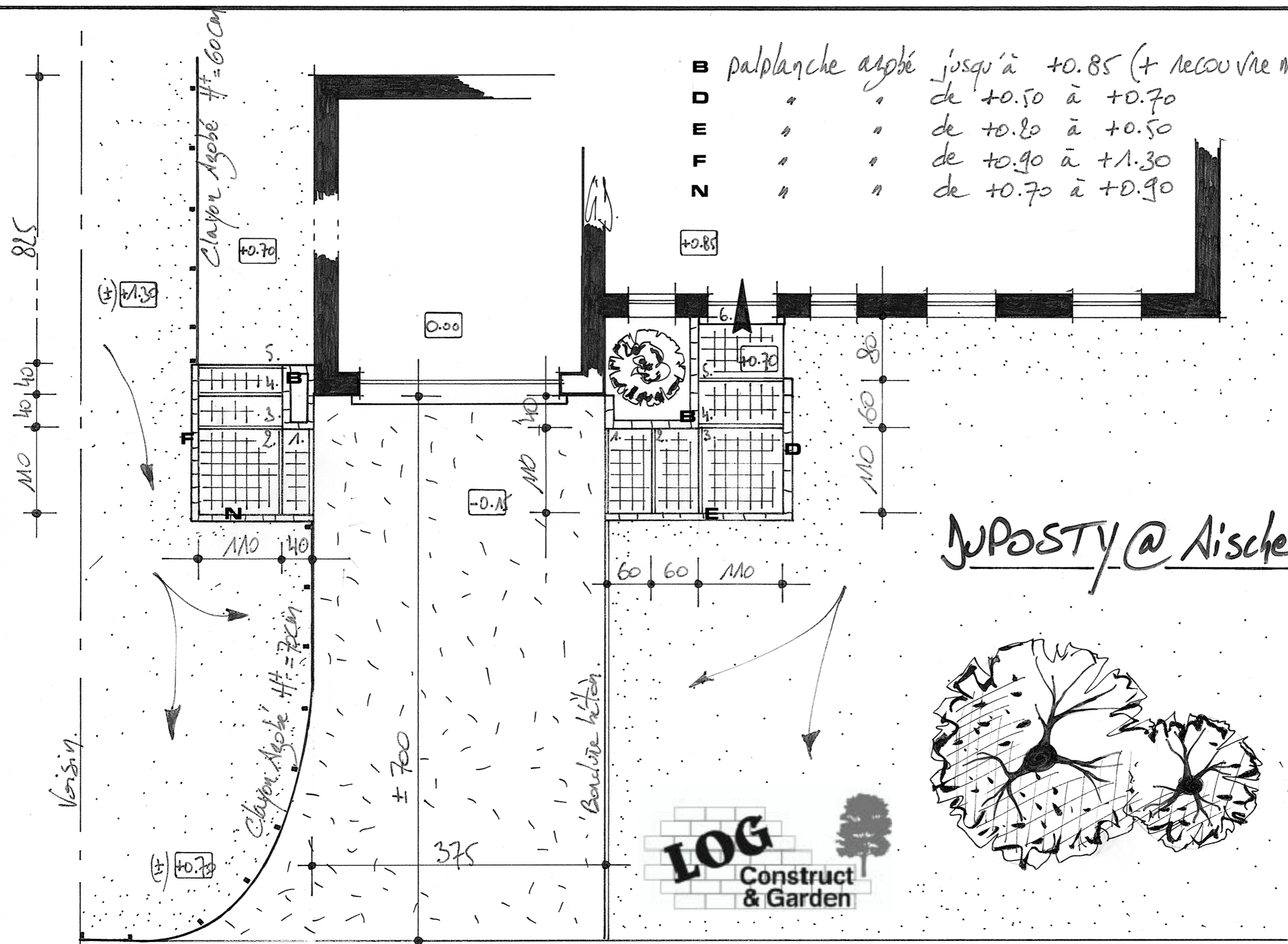


B palplanche azobé jusqu'à +0.85 (+ recouvrement Pierre Bleue à gauche)
 D " " de +0.50 à +0.70
 E " " de +0.80 à +0.50
 F " " de +0.90 à +1.30
 N " " de +0.70 à +0.90

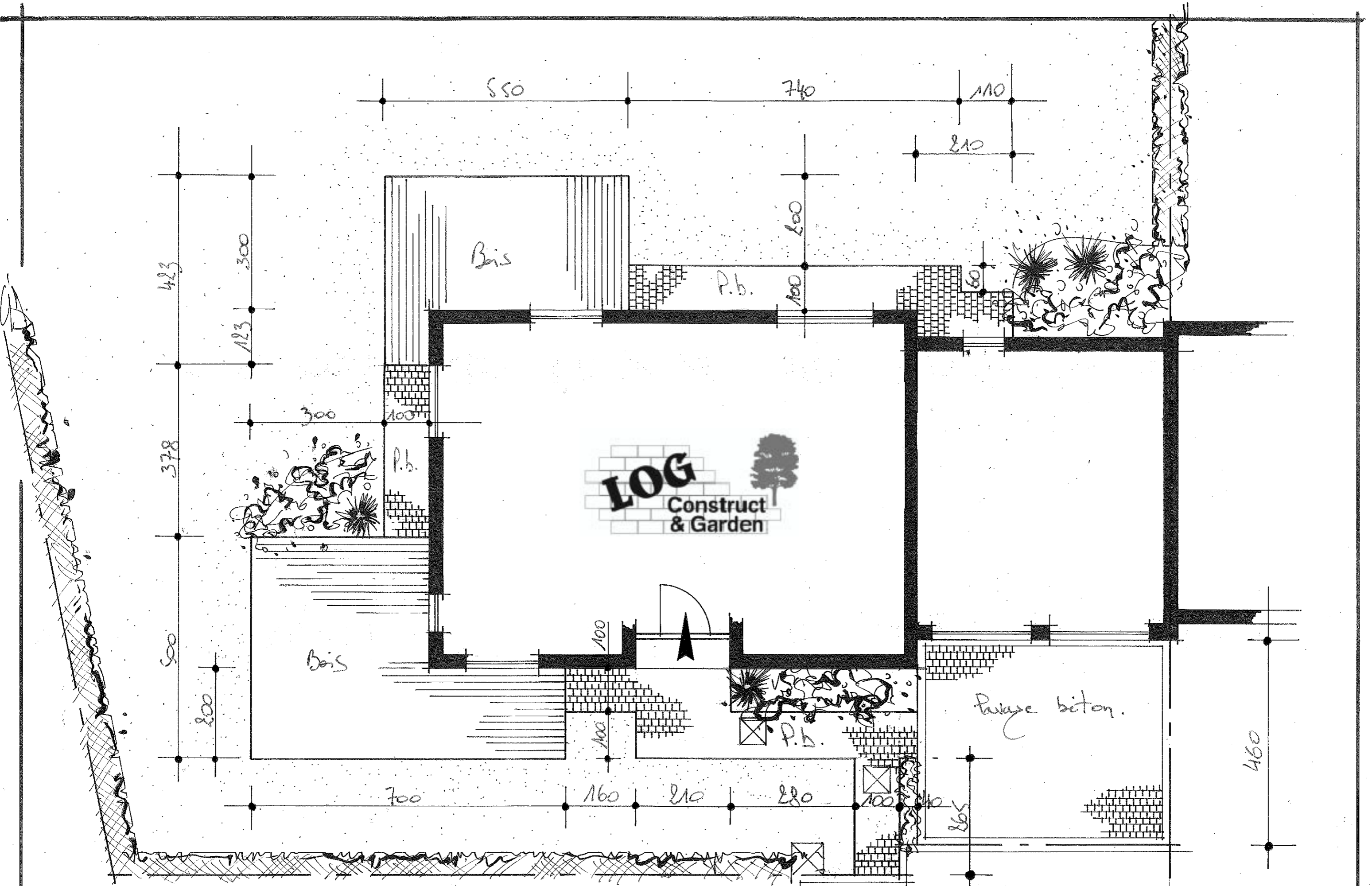


JPOSTY @ Nische-En-Refail.
 Ech. 1/50



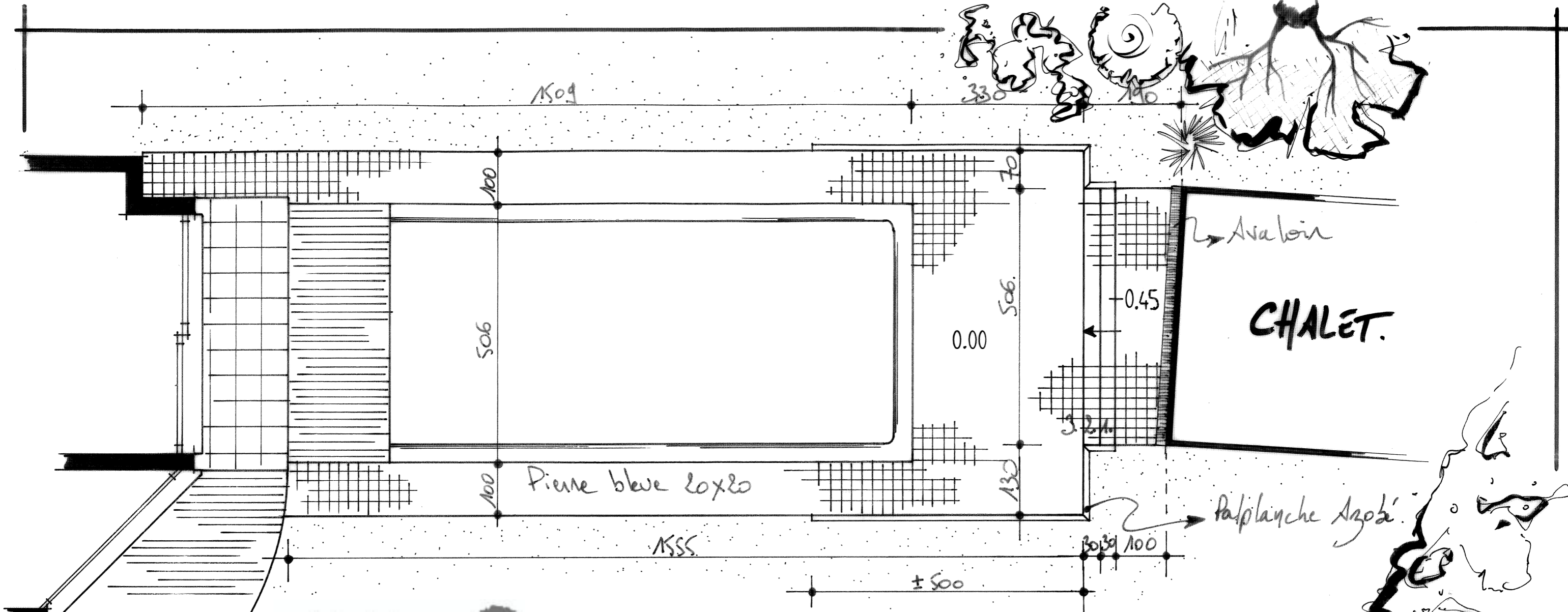
LOG
 Construct
 & Garden

Trottoir.



JURAND@Mont-St-Guibert

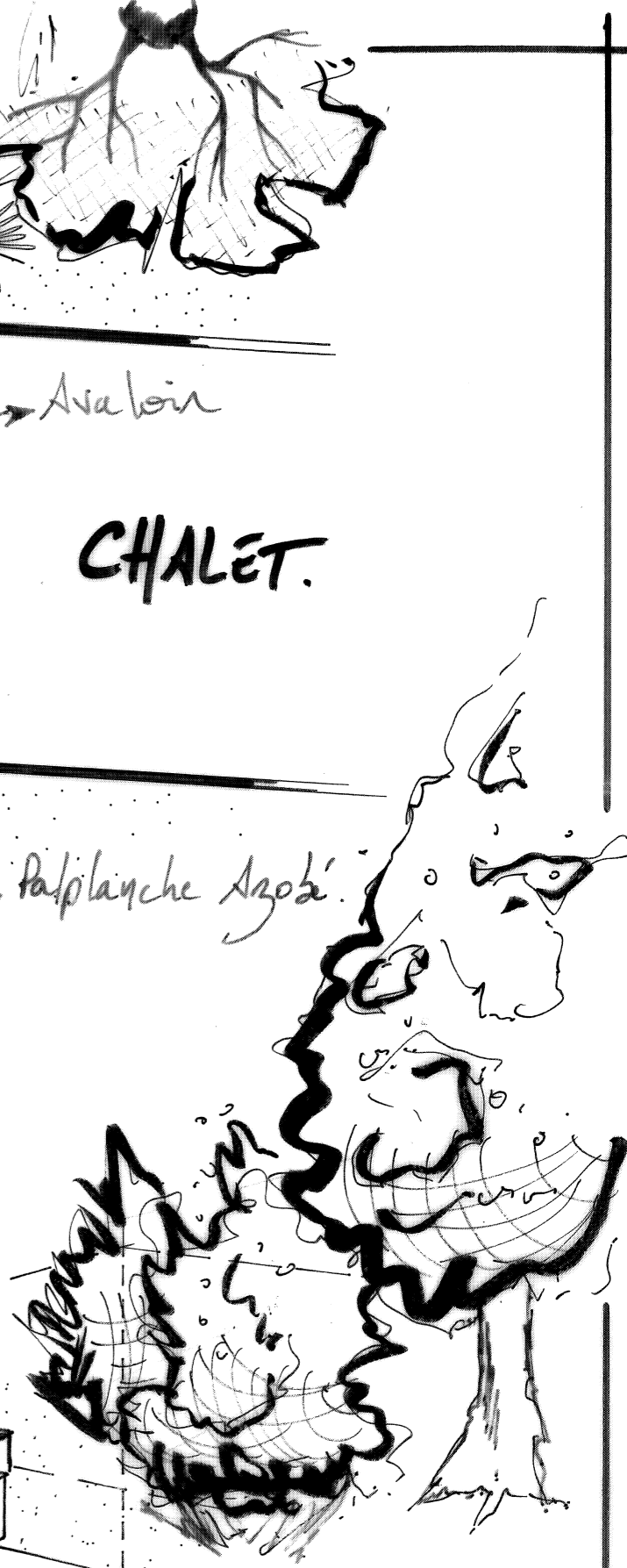
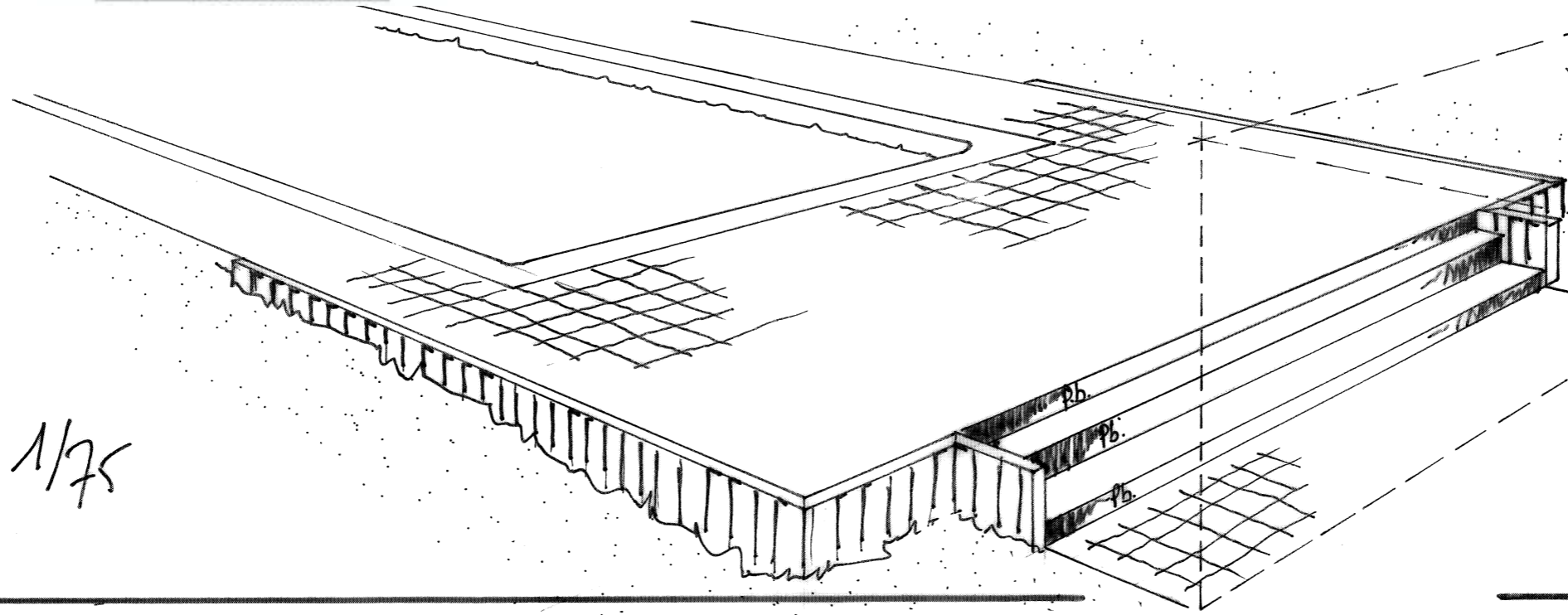
Ech. 1/75

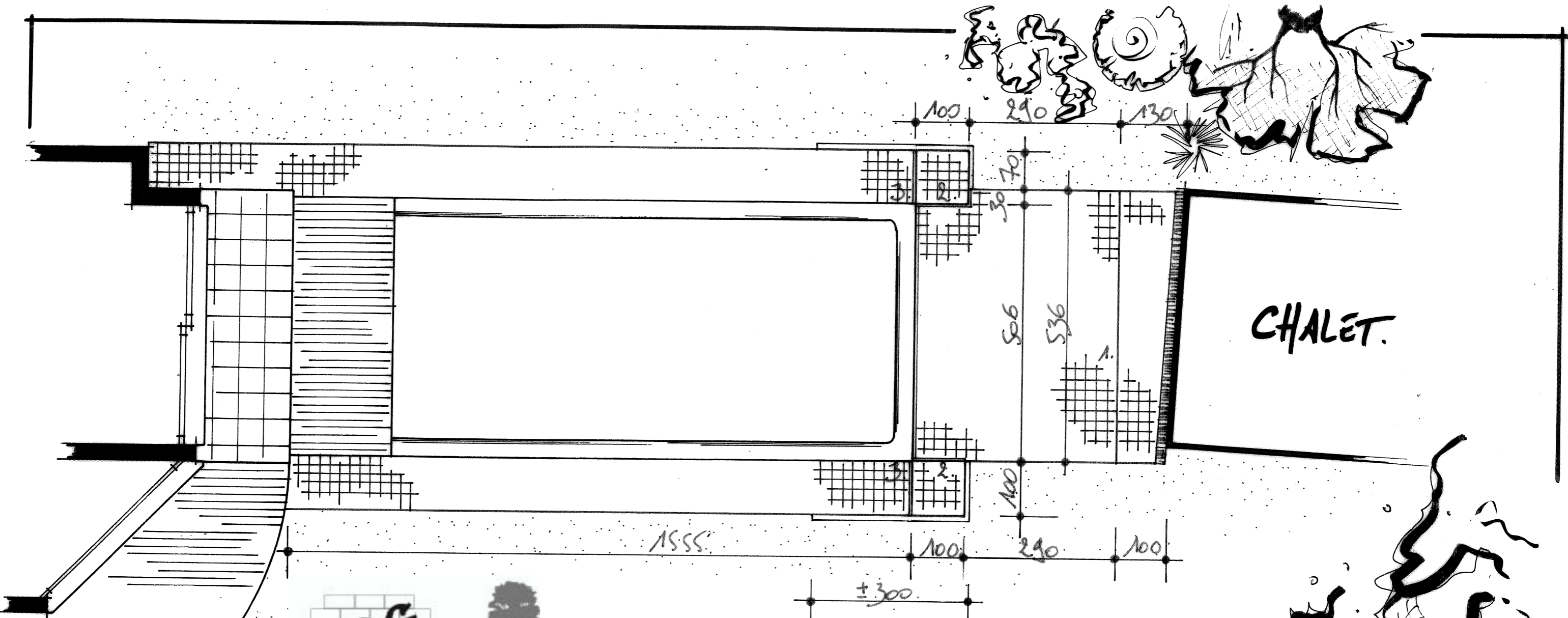


LOG
Construct
& Garden

HERIS@ Dion-Valmont.

Ech. : 1/75

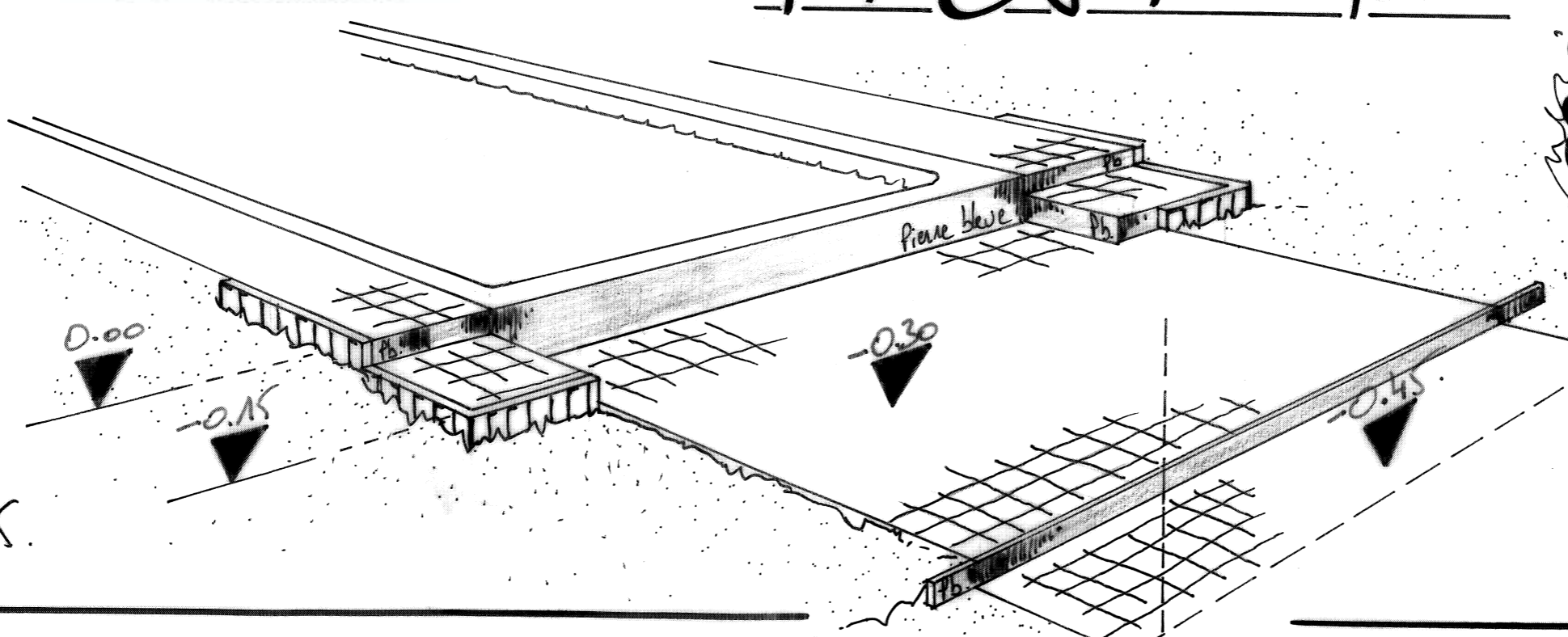




CHALET.

LOG
Construct
& Garden

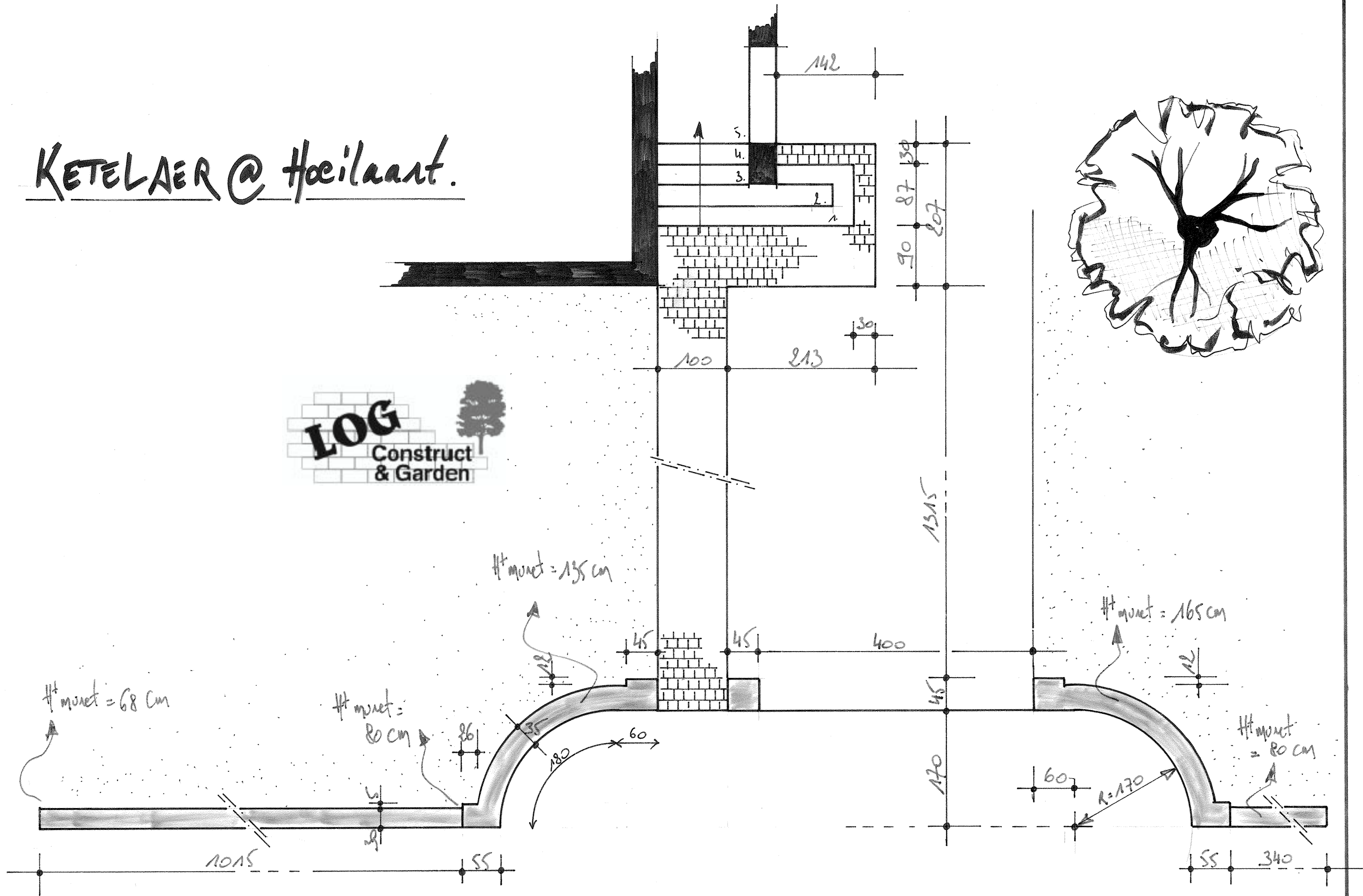
HERIS @ Dion-Valmont.



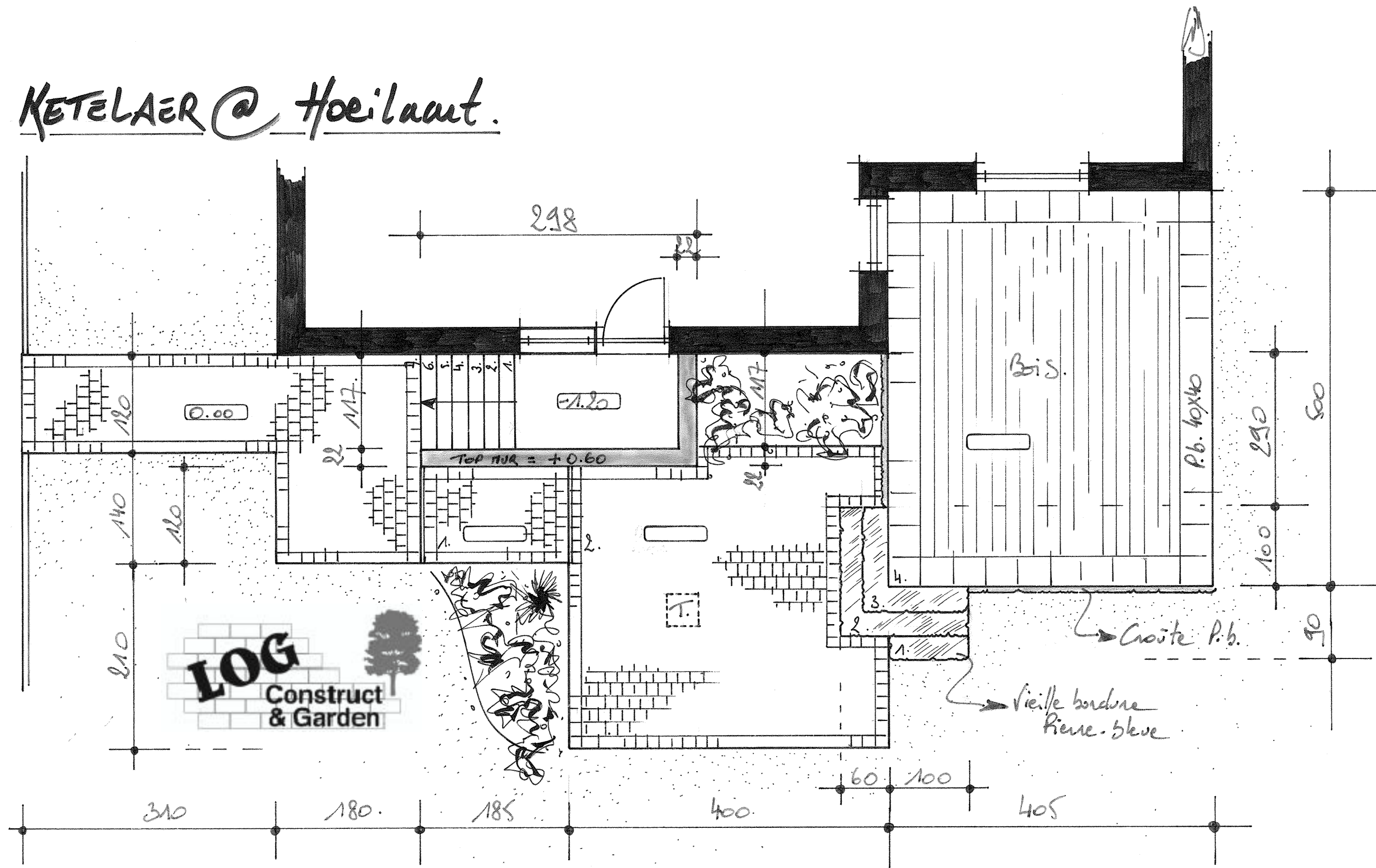
Ech.: 1/75.

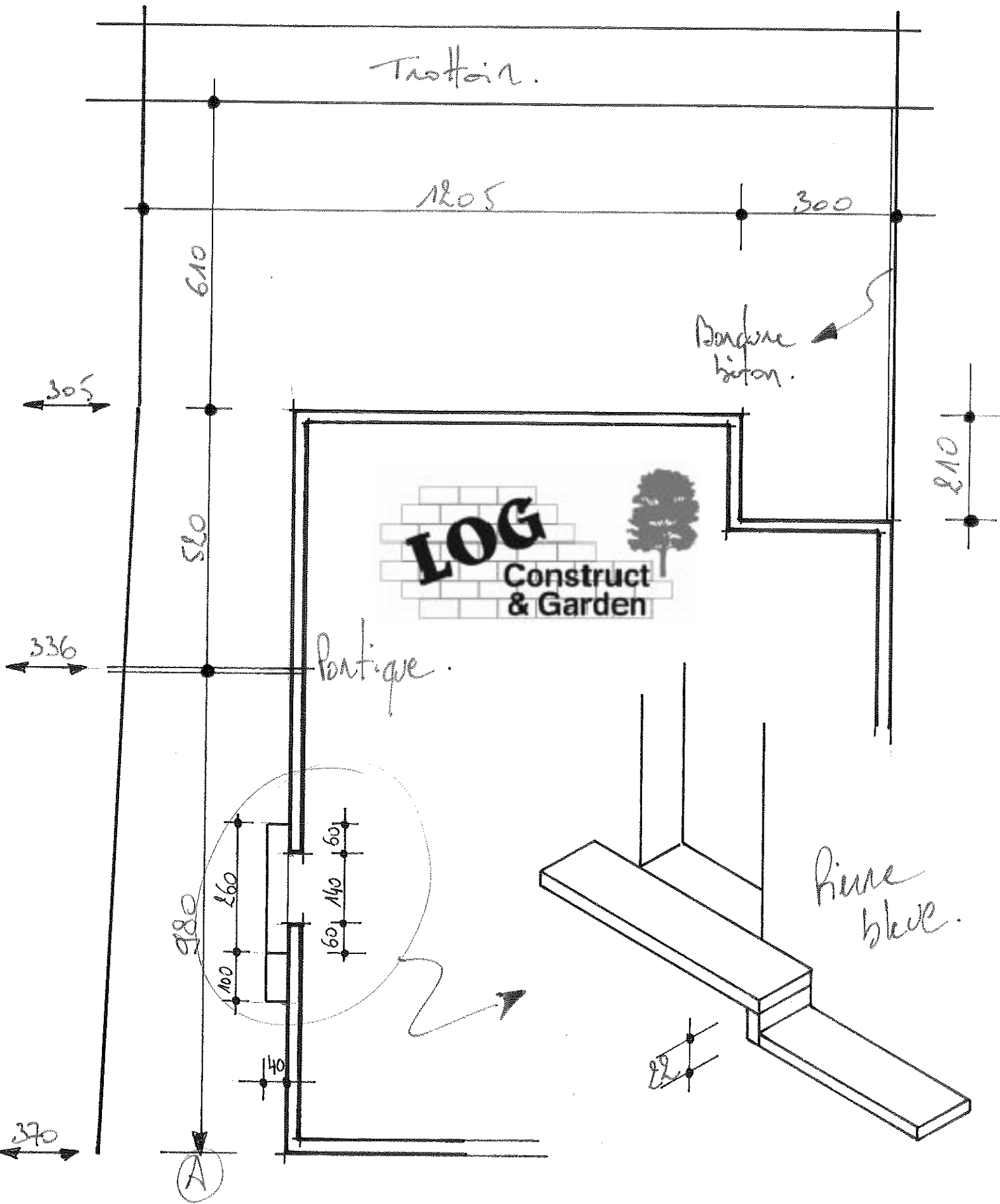


KETELAER @ Heilaant.

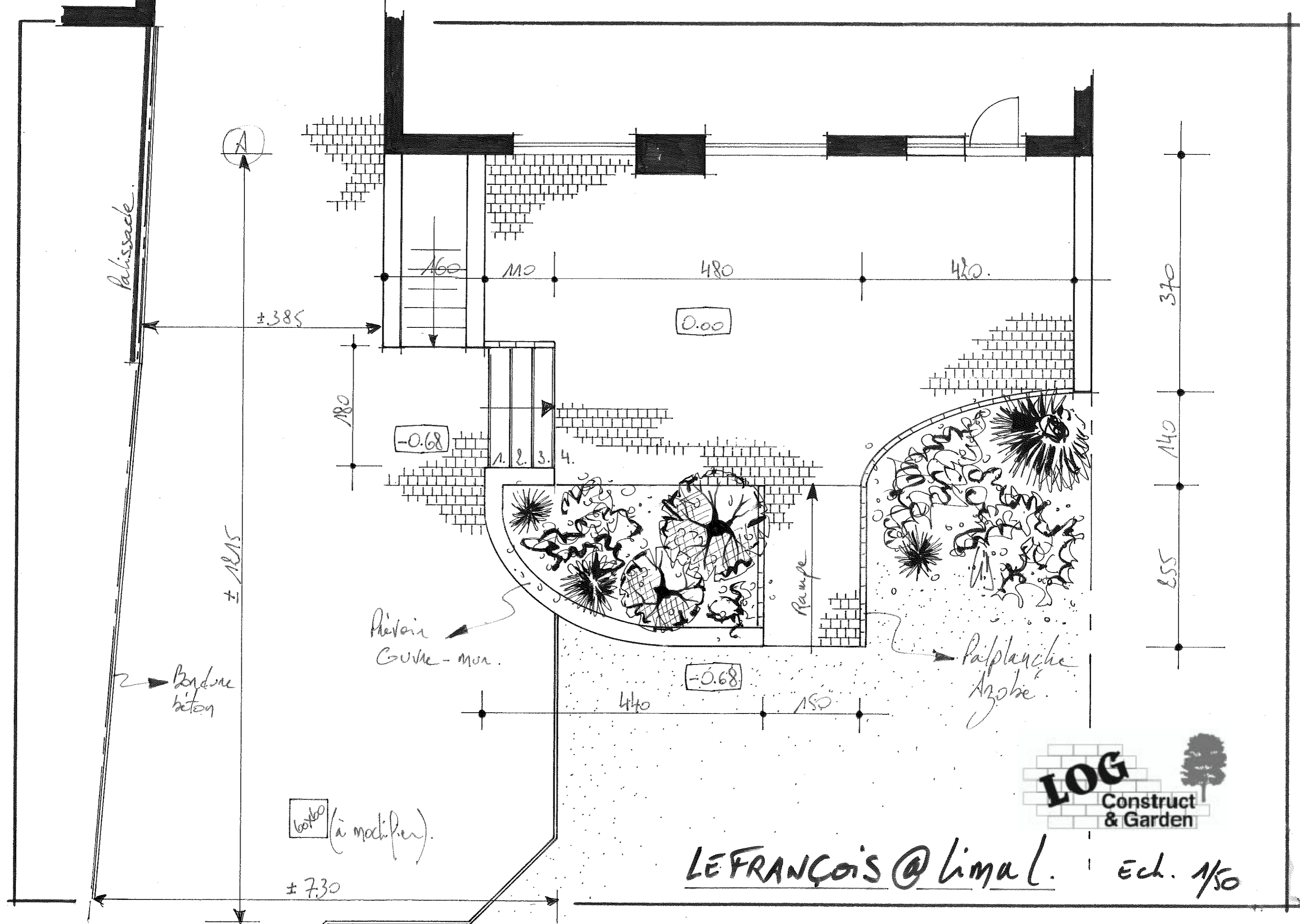


KETELAER @ Hoeilaart.





LEFRANÇOIS @ Limal Ech: 1/100



Palissade.

A

±385

160

110

480

420

0.00

180

-0.68

1. 2. 3. 4.

±1815

Bordure
béton

Muret
Cuvée - mur.

Rampe

Palplanche
Azobé

-0.68

440

150

370

140

655

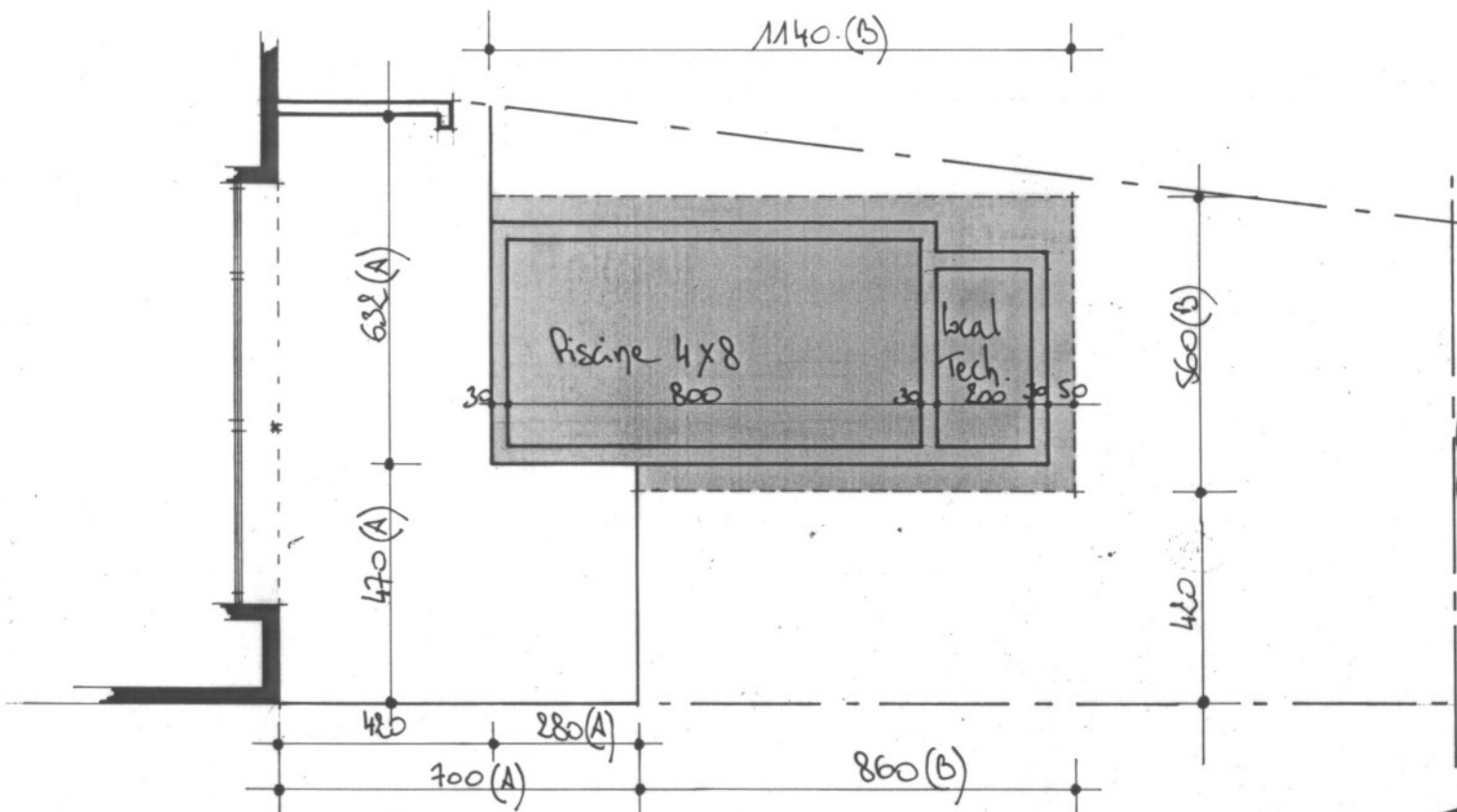
Logo (à modifier)

±7.30




LEFRANÇOIS @ Lima L.

Ech. 1/50

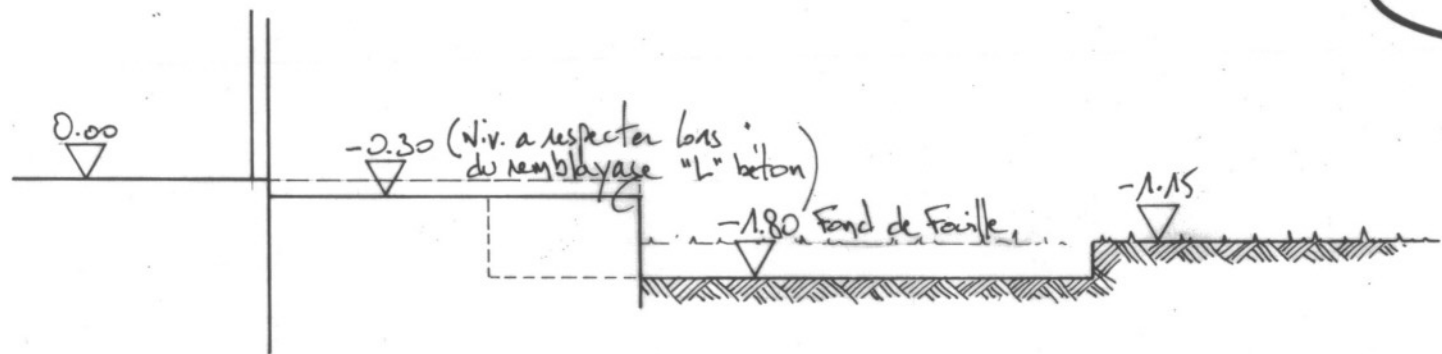


(A) Cotes relatives aux "L" en béton.
 (B) Cotes relatives à la fouille-
 Terrassement

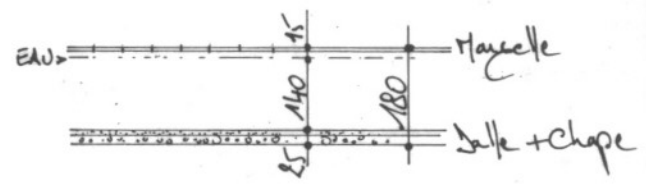
 Zone de Faïlle

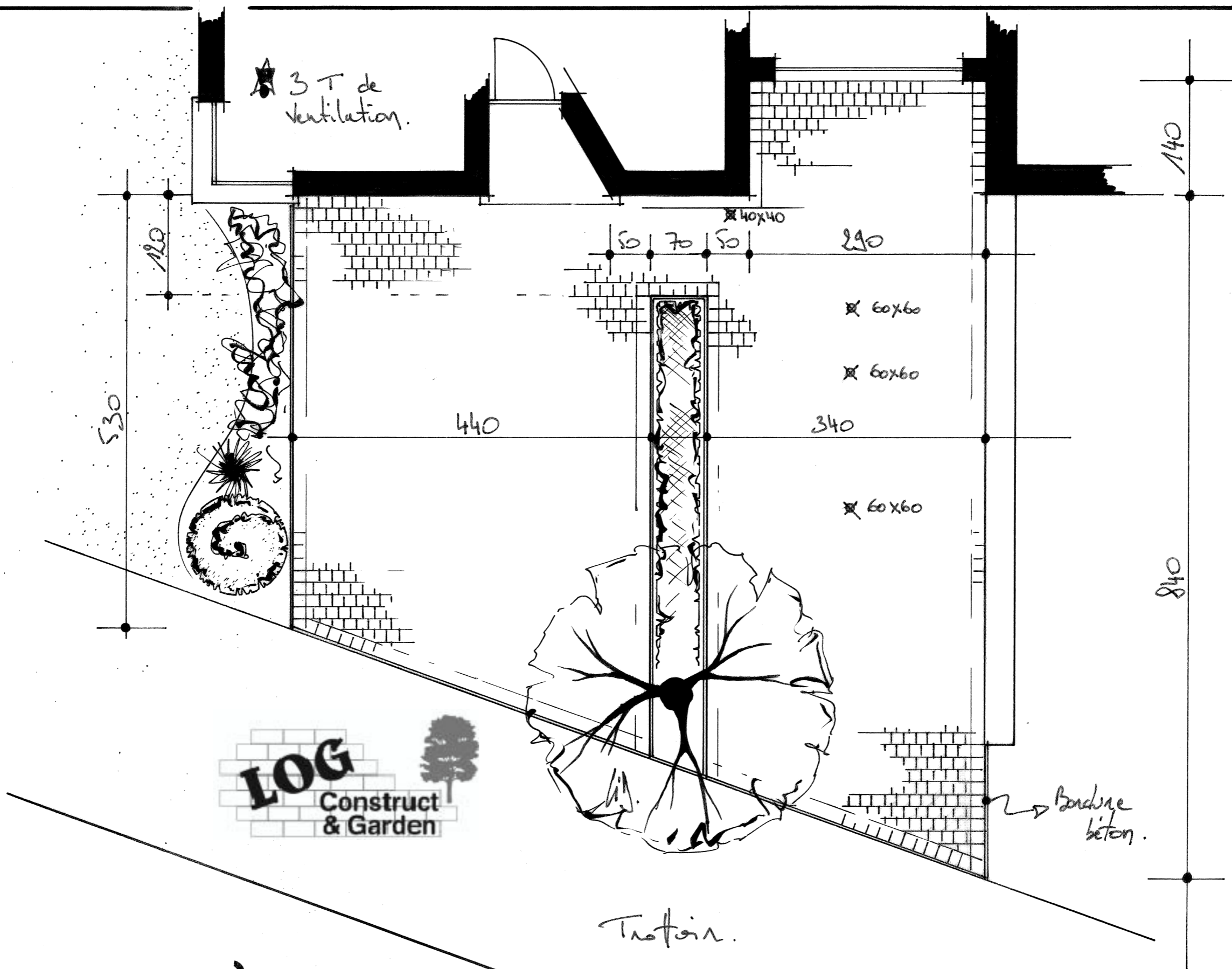
PLAN

Ech. : 1/100.

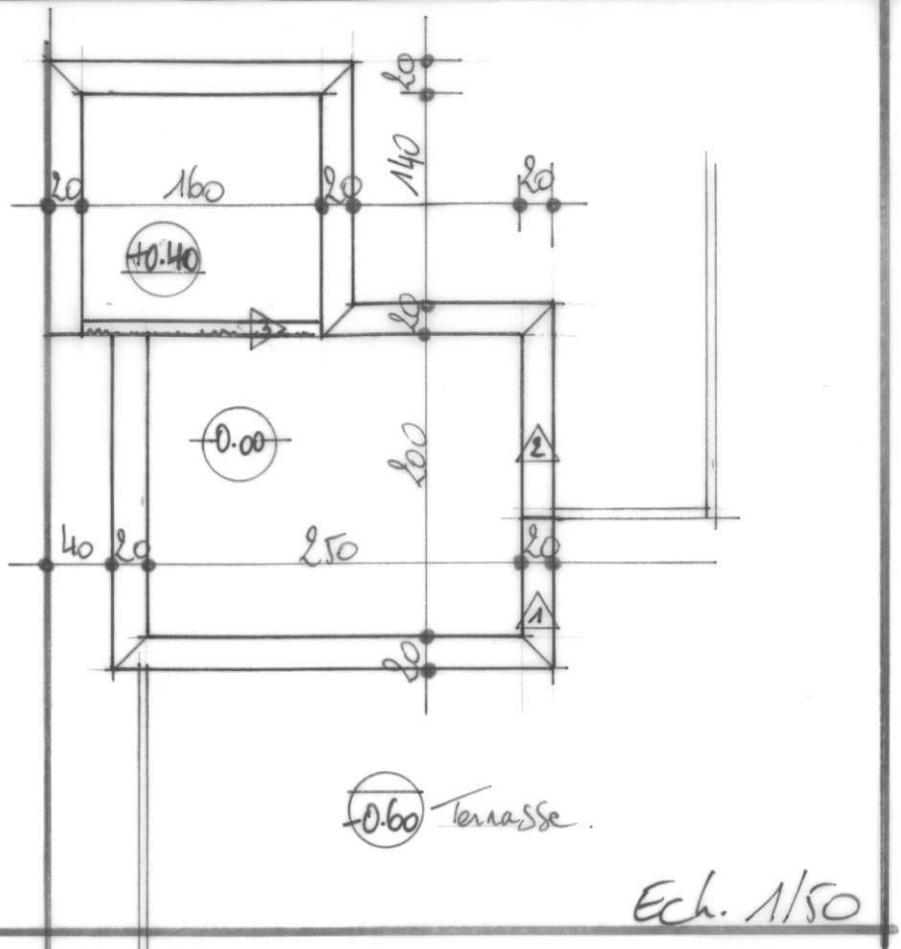


COUPE

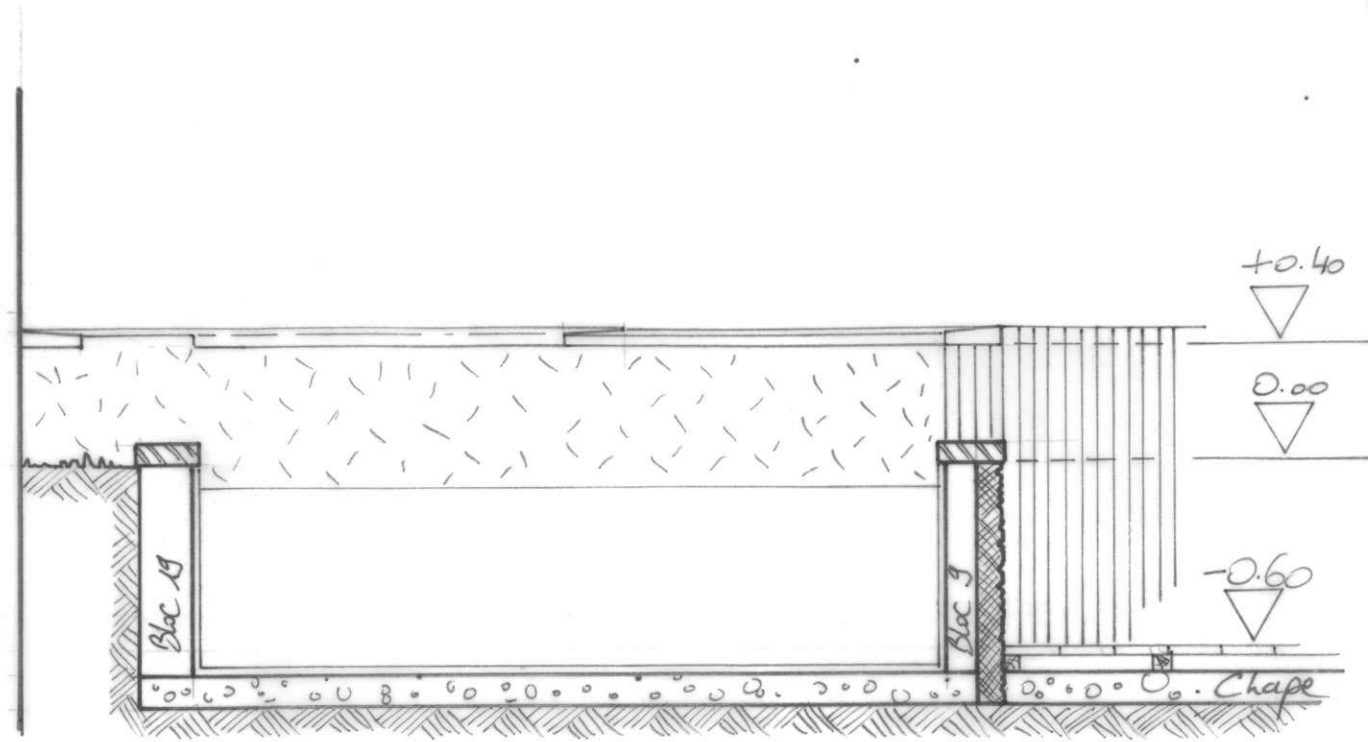




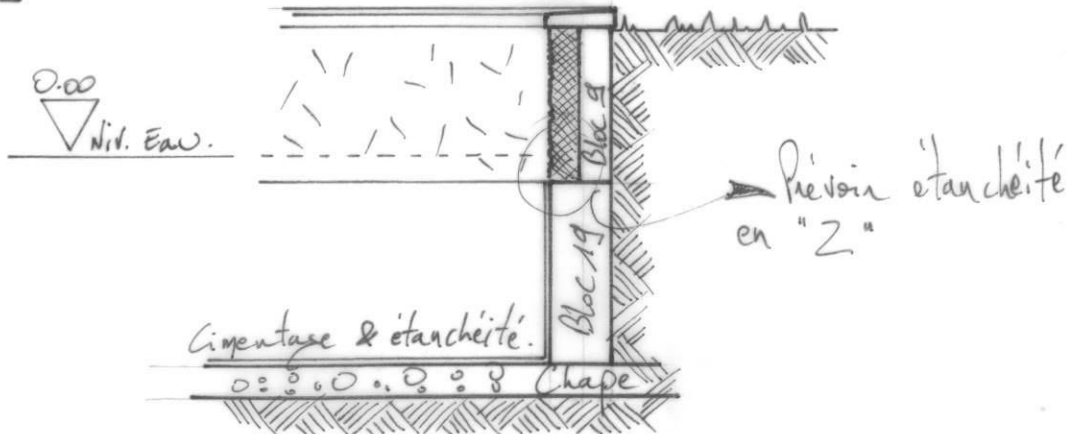
LONGBY @ Wavre.



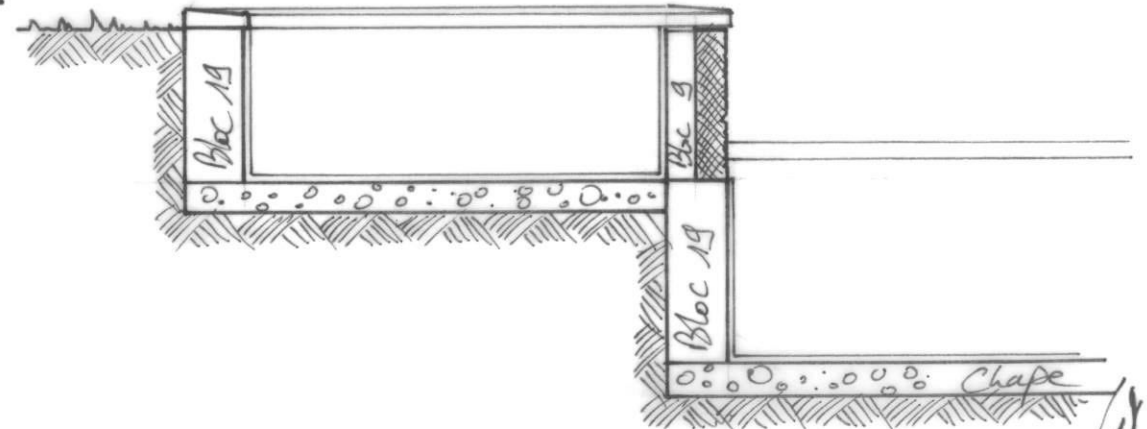
1.



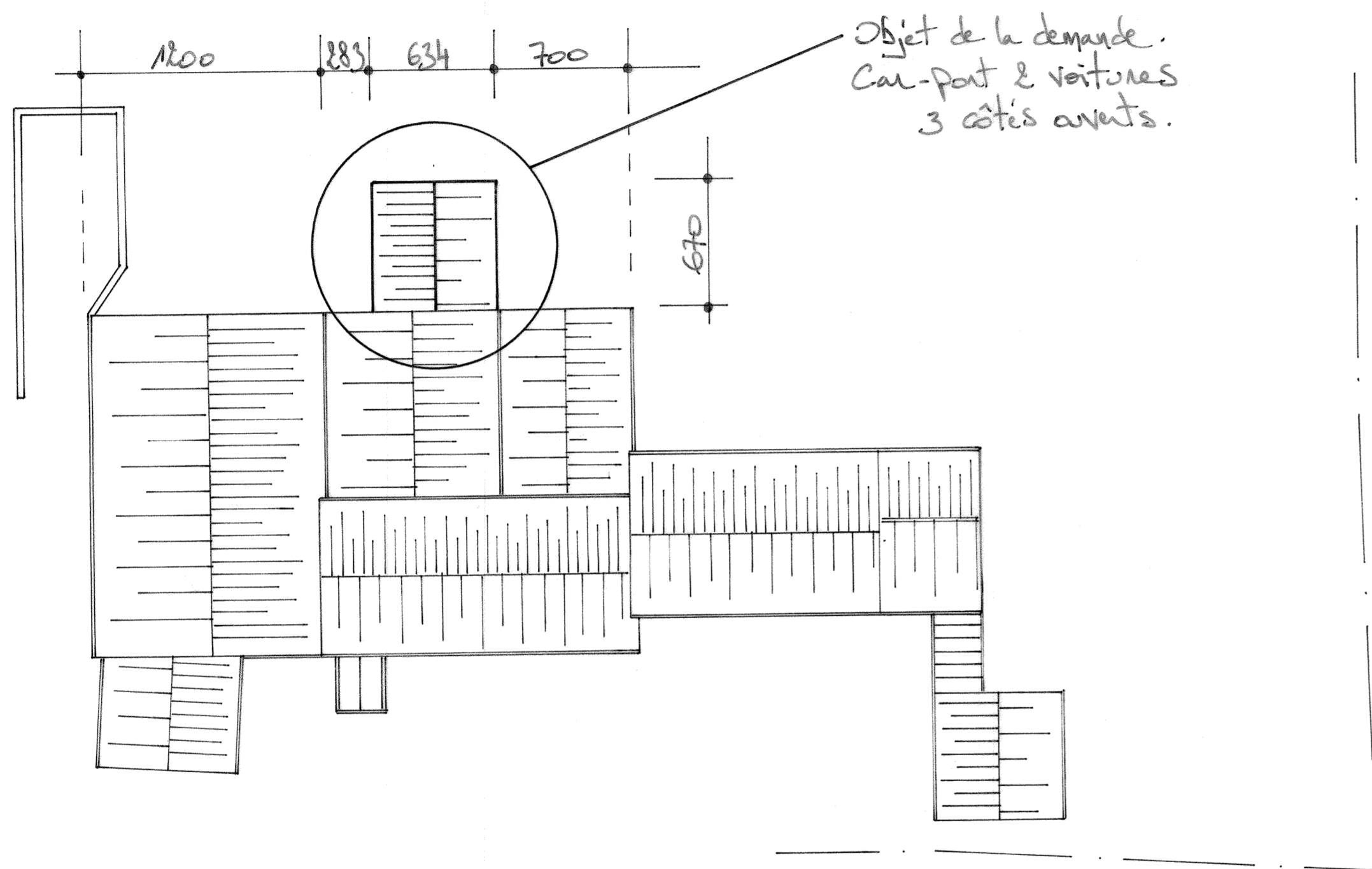
2.



3.

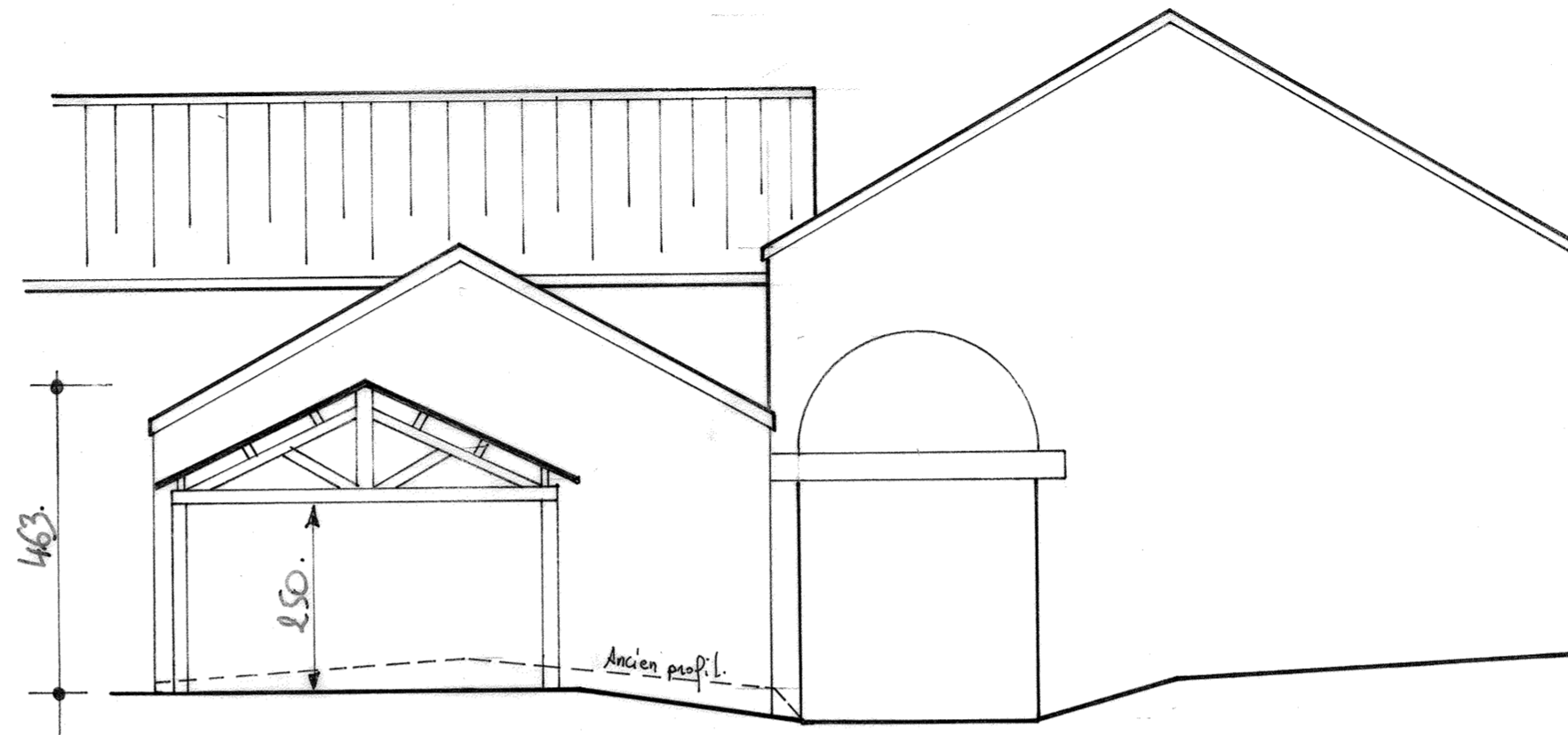


Ech. 1/25



RUE DU PUIS

IMPLANTATION. Ech: 1/250.



ELEVATION. Ech: 1/100.

PROJET D'UN CAR-PORT.

NOTES & REMARQUES.